

COVID-19 Trends in St. Louis County

07/09/2020

Overall Trends



	6/21-7/4
1. Daily number of new cases	●
2. Contacts per case*	●
3. Test positivity rate	●
4. Hospital admissions	●
5. Deaths	●
6. Daily tests	●
7. Hospital capacity	●

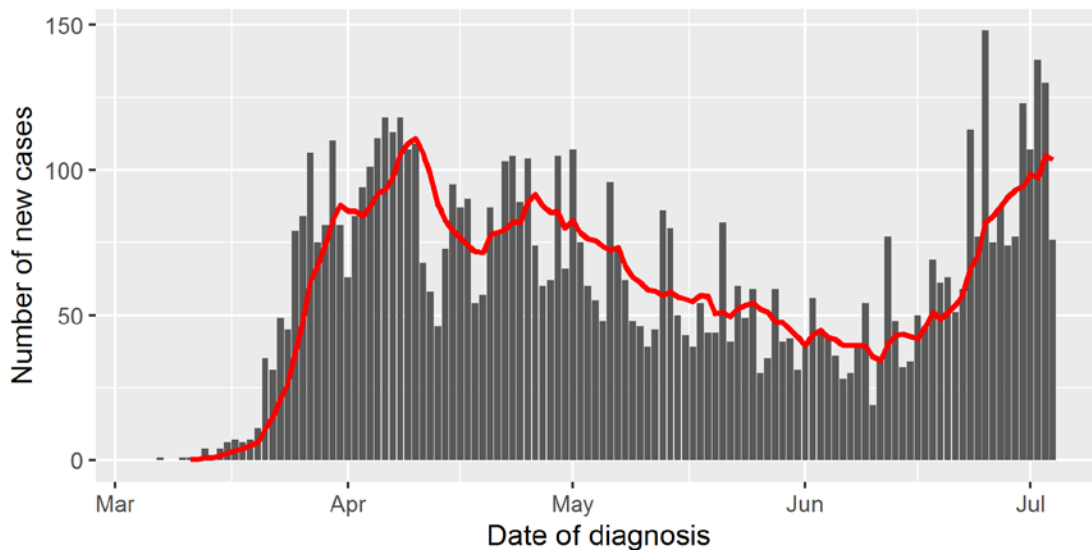
NOTE: To account for reporting and data entry delays, this report focuses on data about COVID-19 cases diagnosed and laboratory specimens collected for COVID-19 testing through 7/4/2020. Unless otherwise specified, all averages are seven-day rolling averages. Data are current as of 7/8/2020. *Black dot represents an indicator currently in development.

New Cases

The average number of new COVID-19 cases diagnosed among St. Louis County residents increased by 94 percent between 6/21 (53.4 new cases per day) and 7/4 (104.0 new cases per day).

Reported COVID-19 Cases Over Time

St. Louis County residents



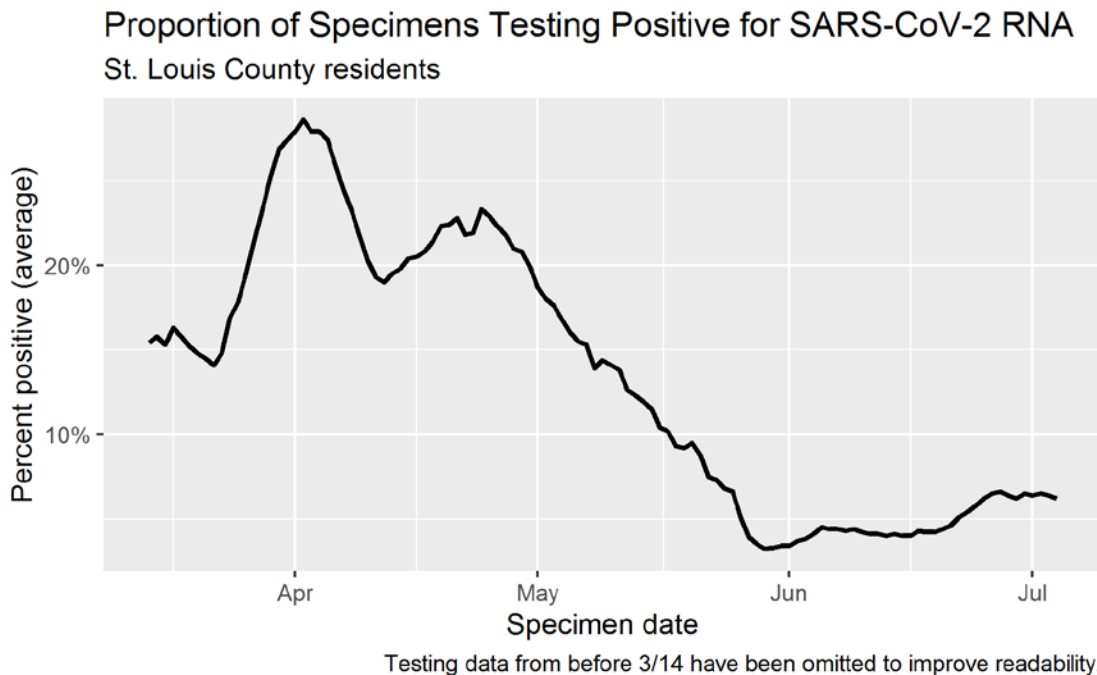
The red line is a rolling seven-day average.

Contacts per Case

This indicator is a work in progress. The indicator will be available in the next update.

Test Positivity Rate

The overall positivity rate for specimens collected between 6/28 and 7/4 is 6.2 percent. This is a slight increase from the approximately 4 percent plateau that St. Louis County experienced during late May and throughout most of June, but still considerably lower than the 15 to 20 percent positivity rate we saw in late April and early May when our rate of new diagnoses was at a similar level, but testing was less widely available.



Hospital Admissions

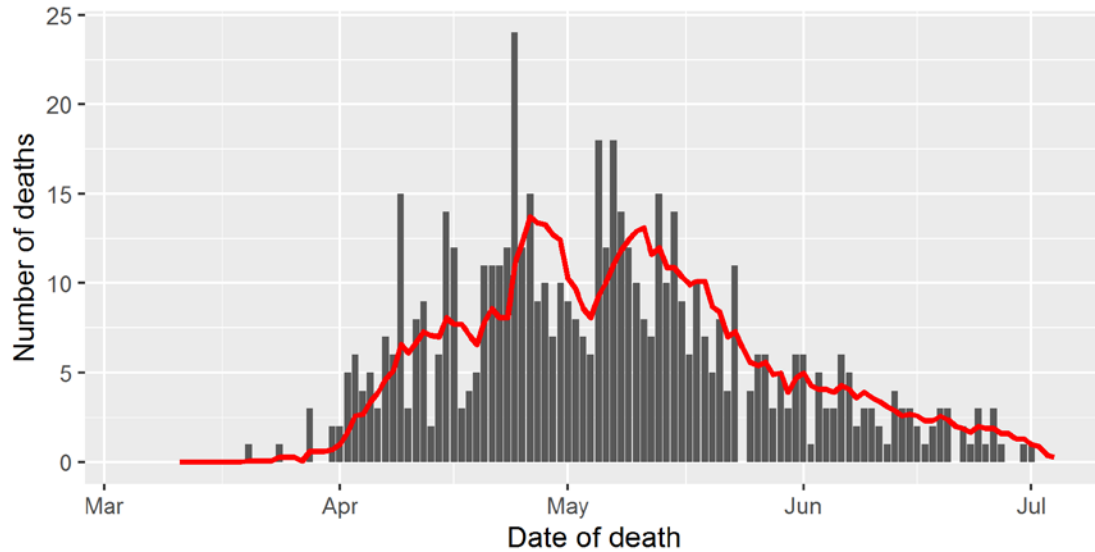
Based on data released by the Pandemic Task Force and [analyzed by Dr. Christopher Prener at St. Louis University](#), average new hospitalizations for COVID-19 at SSM, BJC, Mercy, and St. Luke's hospitals in the St. Louis metro area increased by 26 percent between 6/21 (16.43 admissions per day) and 7/6 (20.71 admissions per day).

St. Louis County DPH is still developing its ability to more specifically track COVID-19-associated hospitalizations among St. Louis County residents.

Deaths

COVID-19-associated deaths decreased by 85 percent between 6/21 (2.0 deaths per day) and 7/4 (0.3 deaths per day), likely due to aggressive testing and infection control strategies implemented in long-term care facilities and the corresponding decrease in cases diagnosed among people aged 60 and older.

Reported COVID-19 Associated Deaths Over Time St. Louis County residents

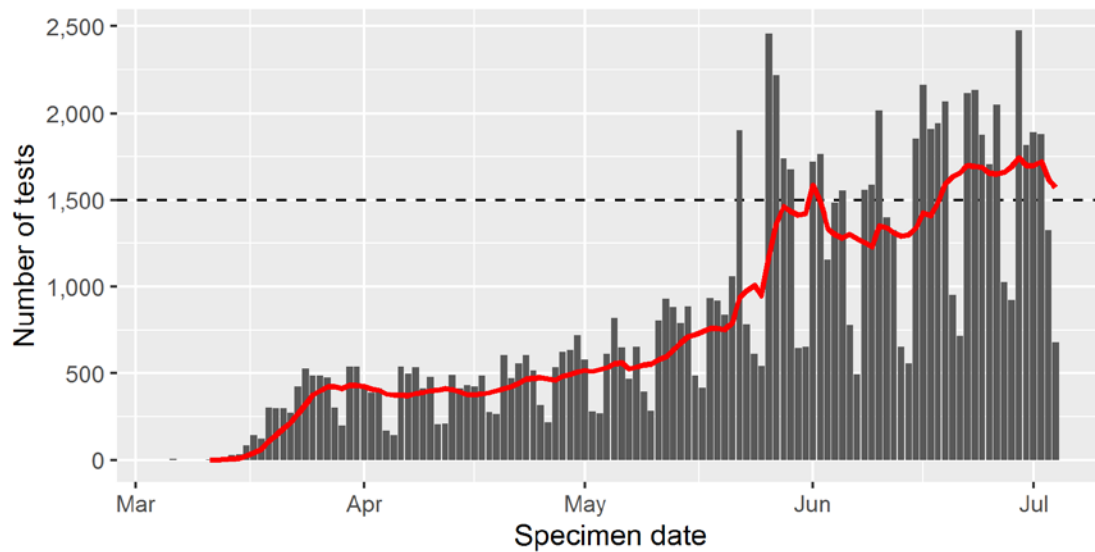


The red line is a rolling seven-day average.

Tests per Day

As of 7/4, the average number of specimens being collected for COVID-19 PCR testing from St. Louis County residents is 1,571 per day, which is 105 percent of St. Louis County's target of 1,500 tests per day (approximately 150 tests per 100,000 residents per day).

COVID-19 Tests per Day St. Louis County residents



The red line is a rolling seven-day average.

Hospital Capacity

According to data released by the Pandemic Task force, 68 percent of the inpatient beds at SSM, BJC, Mercy, and St. Luke's hospitals in the St. Louis metro area are currently filled.

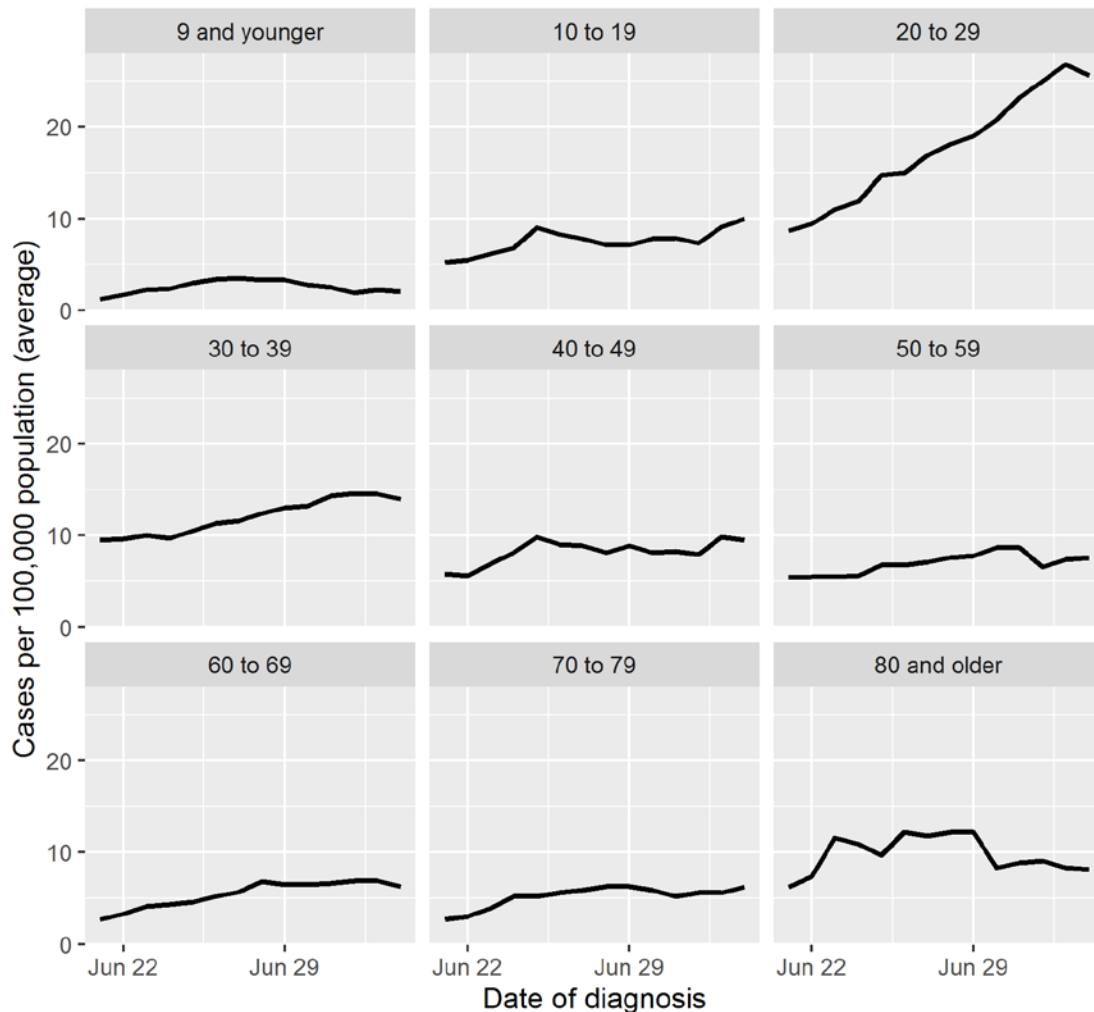
Demographic Trends

Age Groups

While new COVID-19 diagnoses have increased among all age groups over the past two weeks, the most notable change has been the 195 percent increase reported among people aged 20 to 29 years (from 11.0 to 32.4 new cases per day).

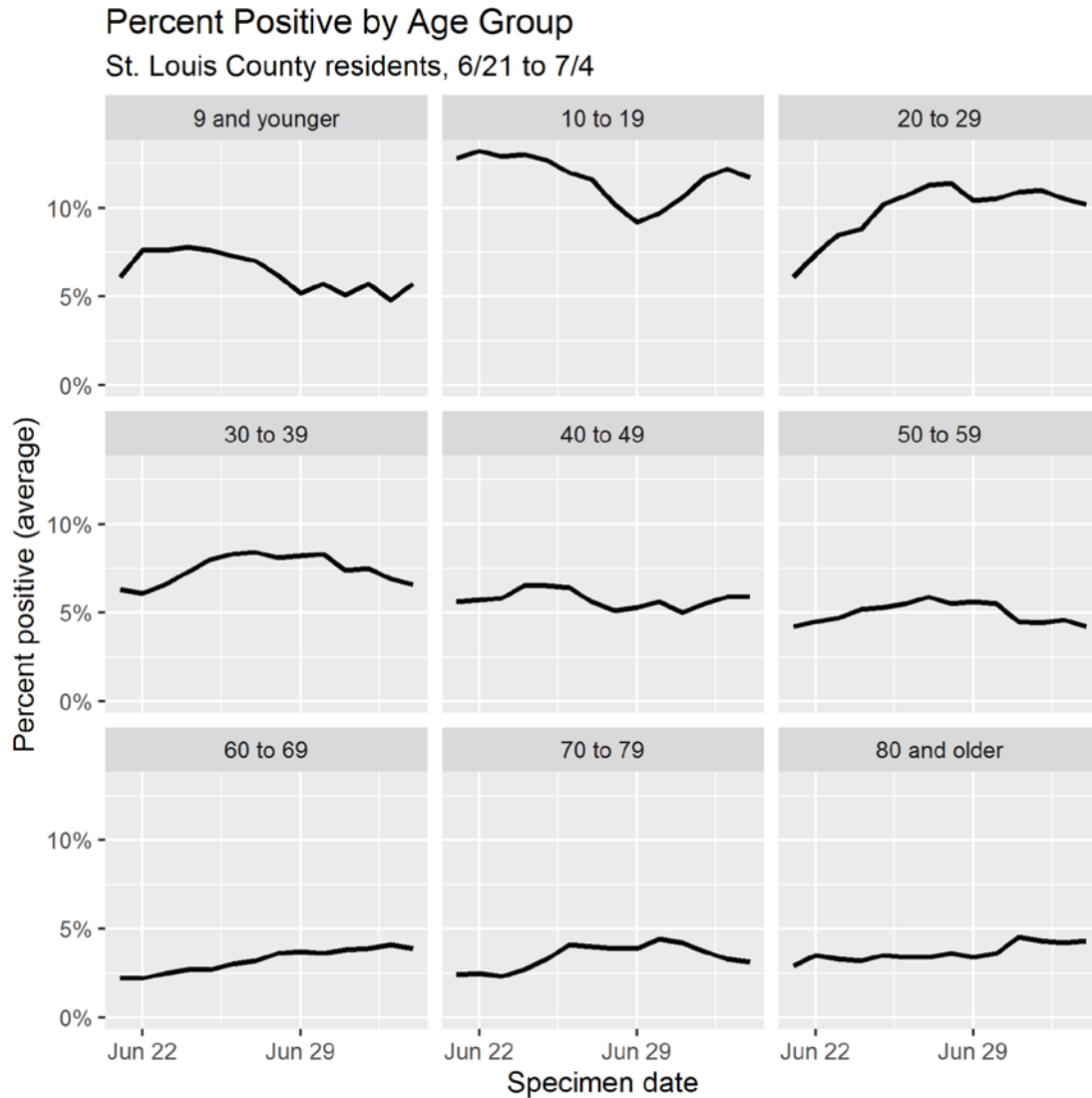
Rate of New COVID-19 Diagnoses by Age Group

St. Louis County residents, 6/21 to 7/4



Similarly, the prevalence of SARS-CoV-2 infection among those tested in St. Louis County is currently highest among people aged 10 to 19 (11.7 percent) and 20 to 29 years (10.2 percent).

The average positivity rate is currently below 5 percent for people aged 50 and older, and between 5 and 10 percent for all other age groups.

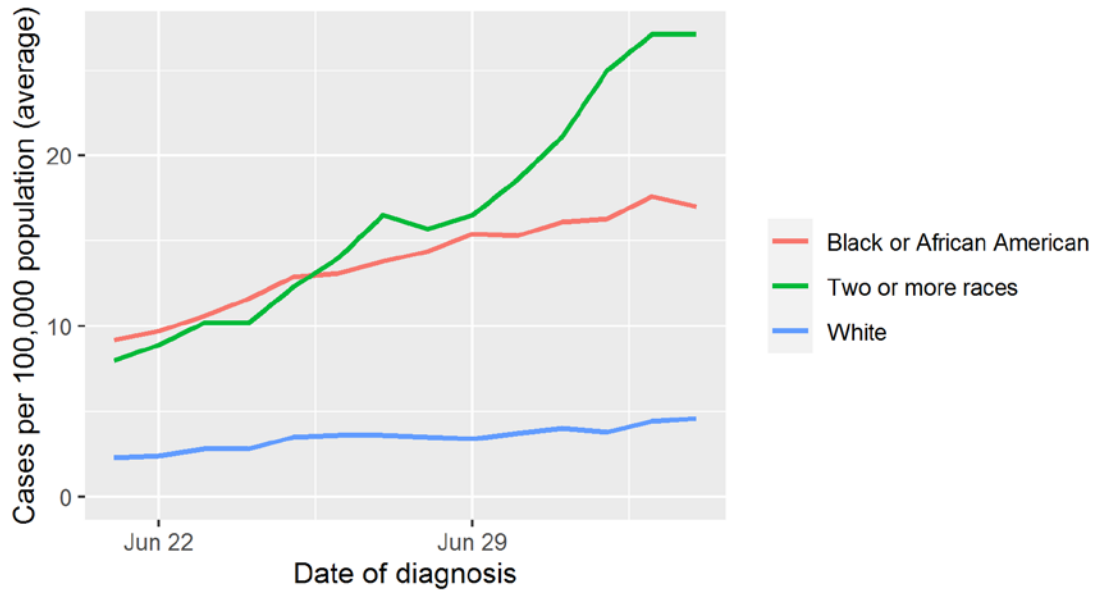


Race

Between 6/21 and 7/4, new COVID-19 diagnoses increased by 85 percent among black or African American residents of St. Louis County (from 22.1 to 40.9 cases per day), by 105 percent among whites (from 15.4 to 31.6 cases per day), and by 237 percent among people identifying as multiracial (from 1.9 to 6.4 cases per day).

Racial groups with fewer than one case diagnosed per day (Asian, American Indian/Alaska Native, Native Hawaiian/Other Pacific Islander, and other race) have been excluded from this analysis.

Rate of New COVID-19 Diagnoses by Race
 St. Louis County residents, 6/21 to 7/4



Ethnicity

During the same period, new COVID-19 diagnoses increased by 42 percent among Hispanic or Latinx residents of St. Louis County (from 3.6 to 5.1 cases per day), while new diagnoses among non-Hispanic residents increased by 92 percent (from 34.4 cases per day to 65.9 cases per day). However, the per-capita rate of new diagnoses among Hispanic or Latinx residents remains more than double the rate among non-Hispanic residents.

Rate of New COVID-19 Diagnoses by Ethnicity
 St. Louis County residents, 6/21 to 7/4

